

# Standing Crime Scrutiny Panel Performance Report

## Executive Summary

## Agenda Item

### New updates on performance indicators since last meeting:

- ASB calls (-5.3%), Burglary (-6.8%), Criminal Damage (-1.3%), and Theft of Motor Vehicles (-17.3%) are all currently experiencing reductions in the rolling 12-months to 8<sup>th</sup> March 2016.
- Enfield is currently experiencing a -5.1% decrease in Serious Youth Violence Victims in the FY 15/16 to the 28<sup>th</sup> February. London has experienced an overall increase of +4.0% in the same period.
- Overall, MOPAC Seven crime categories are experiencing a 0.6% increase in the rolling 12 months to date.
- Reported Domestic Abuse Violence with Injury offences have risen by +4.4% in the FY to 2<sup>nd</sup> March 2016.
- Four of the seven MOPAC indicators are currently experiencing increases in the 12-months rolling (Theft from Person +1.1%, Robbery +18.4%, Theft from M/V +4.3%, and Violence with Injury +2.4%).

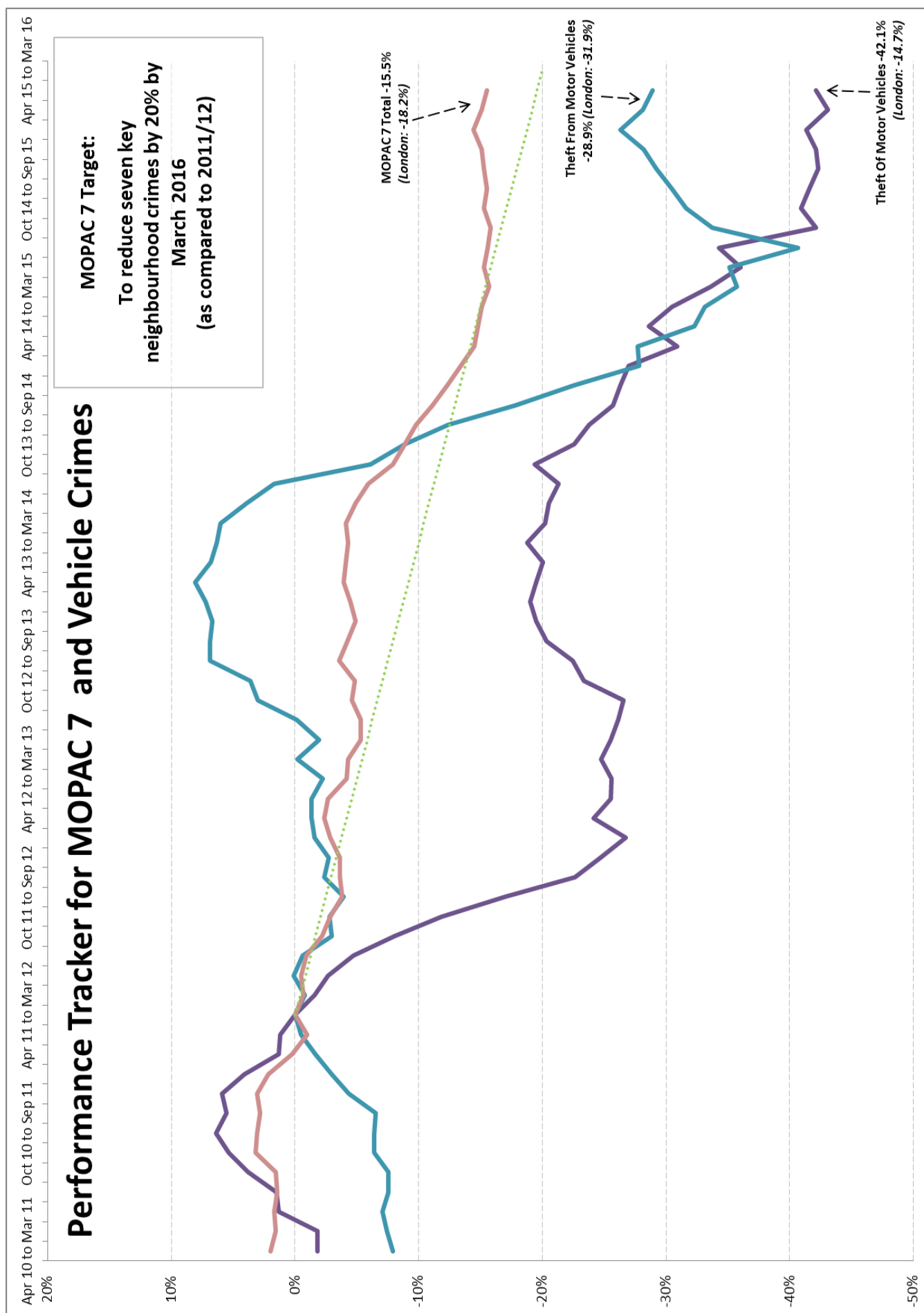
## 1. Performance Overview

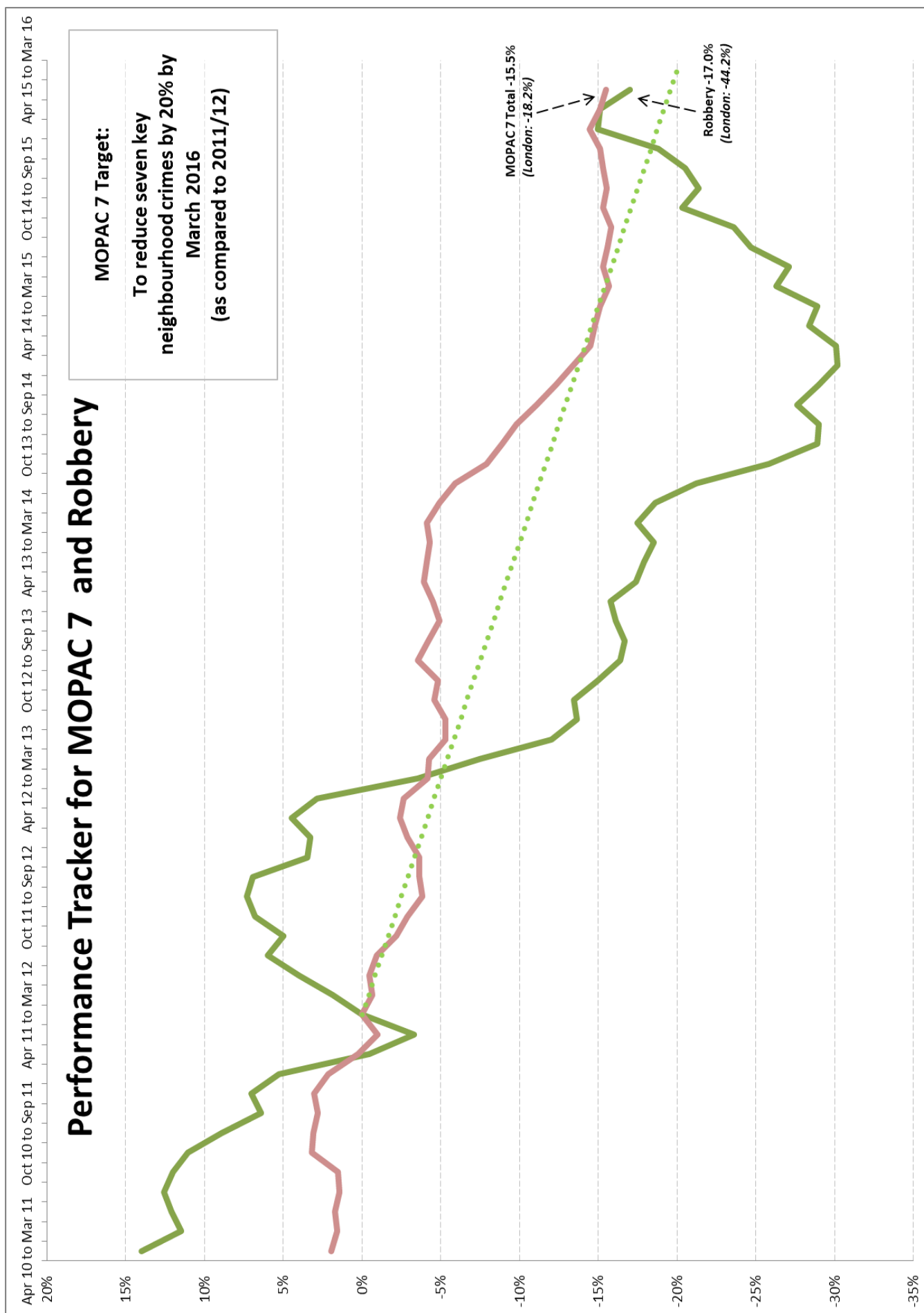
### MOPAC 7 and SSCB Priorities

MOPAC 7 (Data to 8th of March 2016)							
Crime Type	Baseline 2011/12	Target 2015/16	Current 12- Months	Enfield % Change 12- Months	MPS % Change 12- Months	Enfield % Change Baseline	MPS % Change Baseline
Burglary	3,542	2,834	2,776	-6.8%	-5.1%	-21.6%	-27.2%
Criminal Damage	2,598	2,078	2,084	-1.3%	5.4%	-19.8%	-12.4%
Robbery	1,123	898	935	18.4%	-1.4%	-16.7%	-44.3%
Theft from M/V	3,011	2,409	2,118	4.3%	-1.5%	-29.7%	-32.0%
Theft of M/V	1,082	866	625	-17.3%	2.0%	-42.2%	-14.7%
Theft from Person	474	379	464	1.1%	9.6%	-2.1%	-18.5%
Violence with Injury Total	1,674	1,339	2,389	2.4%	5.8%	42.7%	20.1%
Violence with Injury Excl DV	n/a	n/a	1,414	-1.3%	6.2%	n/a	n/a
MOPAC 7 Total	13,504	10,803	11,391	0.6%	1.8%	-15.6%	-18.3%
Additional SSCB Priorities							
ASB Calls	14,014	11,211	8,091	-5.3%	-9.2%	-42.3%	-44.3%
Hate Crime <sup>2</sup>	123	N/A	310	10.7%	21.1%	152.0%	66.9%
Serious Acquisitive Crime <sup>1</sup>	7,846	6,276	5,769	0.7%	-2.7%	-26.5%	-31.09% <sup>2</sup>
Serious Youth Violence <sup>2</sup>	293	232	275	5.7%	6.1%	-6.1%	-8.3%
Domestic Abuse	1,946	N/A	2,934	15.6%	11.2%	50.8%	n/a
Total Notifiable Offences	22,946	N/A	22,816	2.0%	4.4%	-0.6%	-9.4%

1. Serious Acquisitive Crime is defined as Domestic Burglary, Robbery (Personal & Business), Theft from Motor Vehicle and Theft of Motor Vehicle.

2. Data to 15<sup>th</sup> December 2015.





# Standing Crime Scrutiny Panel Performance Report

## London Borough Ranking Tables – MOPAC 7 & Total Notifiable Offences Percentage Changes

MOPAC 7 Crime			
Borough	Feb14-Jan15	Feb15-Jan16	Change
Hillingdon	10830	9970	-7.94%
Redbridge	10014	9387	-6.26%
Bexley	6203	5831	-6.00%
Richmond upon Thames	5270	4984	-5.43%
Sutton	5396	5158	-4.41%
Merton	6145	5936	-3.40%
Wandsworth	10785	10449	-3.12%
Westminster	19525	19088	-2.24%
Ealing	12285	12132	-1.25%
Waltham Forest	10264	10155	-1.06%
Haringey	12660	12537	-0.97%
Croydon	13520	13401	-0.88%
Newham	14297	14188	-0.76%
Lambeth	15176	15064	-0.74%
Bromley	9796	9737	-0.60%
Barking & Dagenham	8183	8154	-0.35%
Enfield	11464	11453	-0.10%
Havering	7775	7843	0.87%
Greenwich	9600	9769	1.76%
Harrow	6120	6255	2.21%
Southwark	13438	13858	3.13%
Kensington & Chelsea	7610	7904	3.86%
Kingston upon Thames	3972	4130	3.98%
Hackney	12228	12884	5.36%
Brent	11234	11844	5.43%
Hounslow	9106	9612	5.56%
Barnet	11899	12589	5.80%
Hammersmith & Fulham	7914	8418	6.37%
Tower Hamlets	12306	13166	6.99%
Lewisham	10382	11118	7.09%
Camden	12505	13541	8.28%
Islington	12576	13890	10.45%
<b>London Total</b>	<b>330478</b>	<b>334445</b>	<b>1.20%</b>

Total Notifiable Offences (TNO)			
Borough	Feb14-Jan15	Feb15-Jan16	Change
Redbridge	20119	19347	-3.84%
Westminster	49087	48964	-0.25%
Bexley	12312	12341	0.24%
Richmond upon Thames	10664	10712	0.45%
Hillingdon	21792	21893	0.46%
Sutton	10789	10900	1.03%
Enfield	22396	22648	1.13%
Croydon	28339	29048	2.50%
Hammersmith & Fulham	19827	20349	2.63%
Brent	25080	25759	2.71%
Southwark	30050	31017	3.22%
Waltham Forest	20838	21556	3.45%
Newham	28989	30074	3.74%
Greenwich	20811	21606	3.82%
Kingston upon Thames	9676	10052	3.89%
Bromley	20221	21049	4.09%
Merton	12038	12595	4.63%
Ealing	25802	27023	4.73%
Wandsworth	22042	23199	5.25%
Lambeth	32748	34566	5.55%
Kensington & Chelsea	18623	19657	5.55%
Hounslow	20552	21731	5.74%
Harrow	12296	13021	5.90%
Barnet	23170	24549	5.95%
Barking & Dagenham	16223	17236	6.24%
Tower Hamlets	26934	28629	6.29%
Hackney	25311	27197	7.45%
Havering	15244	16389	7.51%
Camden	28058	30195	7.62%
Haringey	23606	25479	7.93%
Islington	25807	28235	9.41%
Lewisham	21837	24377	11.63%
<b>London Total</b>	<b>701281</b>	<b>731393</b>	<b>4.29%</b>

## 2. Serious Acquisitive Crime (SAC)

### Robbery

- Currently experiencing a **+18.4% increase (+145)** in the rolling 12-months and a **-16.7% reduction** compared to 2011/12.
- Robberies have historically been at their highest in April and May and we therefore could see a rise in robberies in the next few months.
- Robberies are being monitored through the Enfield Joint Tasking Action Group (JTAG) process.

### Vehicle Crime

- Currently experiencing a **+4.3% increase (+88)** for Theft from M/V and a **-17.3% decrease (-131)** for Theft of M/V in the rolling 12-months.
- In February, police received additional resources to target Vehicle Crime. The operation was considered a success and will likely be repeated in the near future.
- More than three-quarters of all vehicle crime offences are Theft from M/V
  - Thefts of licence plates consistently constitute around 30% of Theft from M/V.
  - Thefts of tools consistently occur at repeat locations where vans are parked overnight.
- The Enfield Joint Tasking Action Group (JTAG) is monitoring the evolution of Theft from Motor Vehicle.

### Burglary

- Currently experiencing a **-6.8% reduction (-204)** in the rolling 12-months and a **-21.6% reduction** compared to 2011/12.
- Currently, a proportion of burglary offenders are committing crime in Barnet and the bordering area of Enfield
- Currently household burglary in Enfield is at its lowest level in several years.
- MetTrace and the alley gating schemes continue to be implemented across the borough.

